



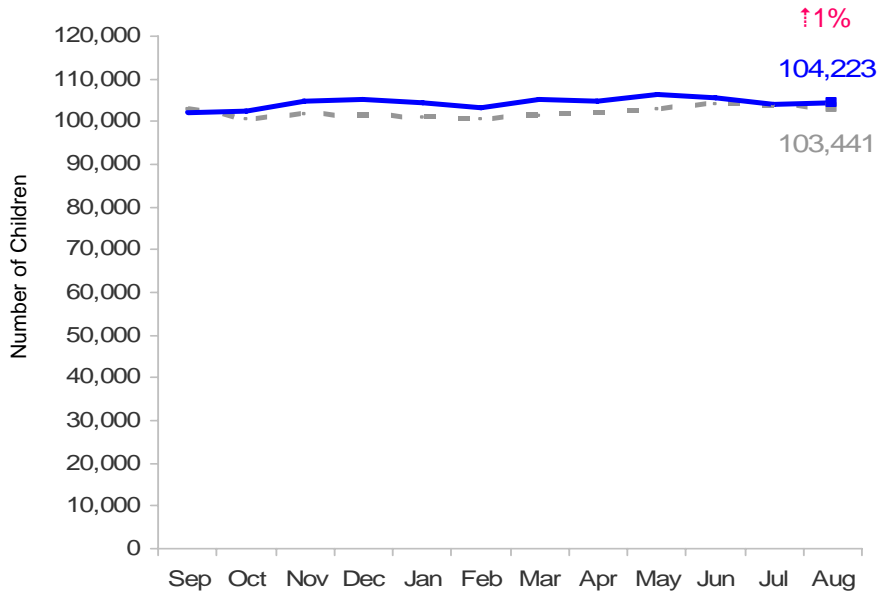
Flash

October 2009

Publication Date: 10/29/09

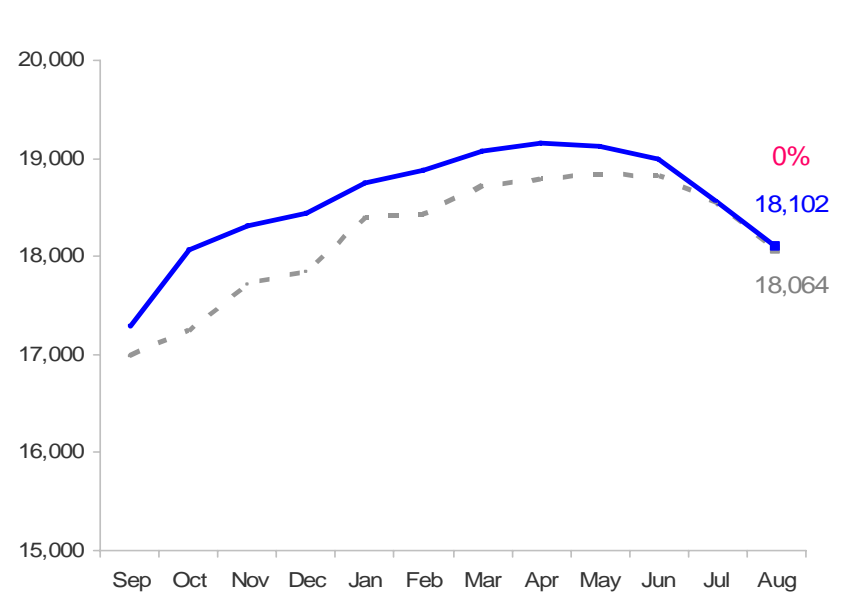
Child Care Enrollment

Sep 2007 - Aug 2009 (End of Month)



Head Start Enrollment

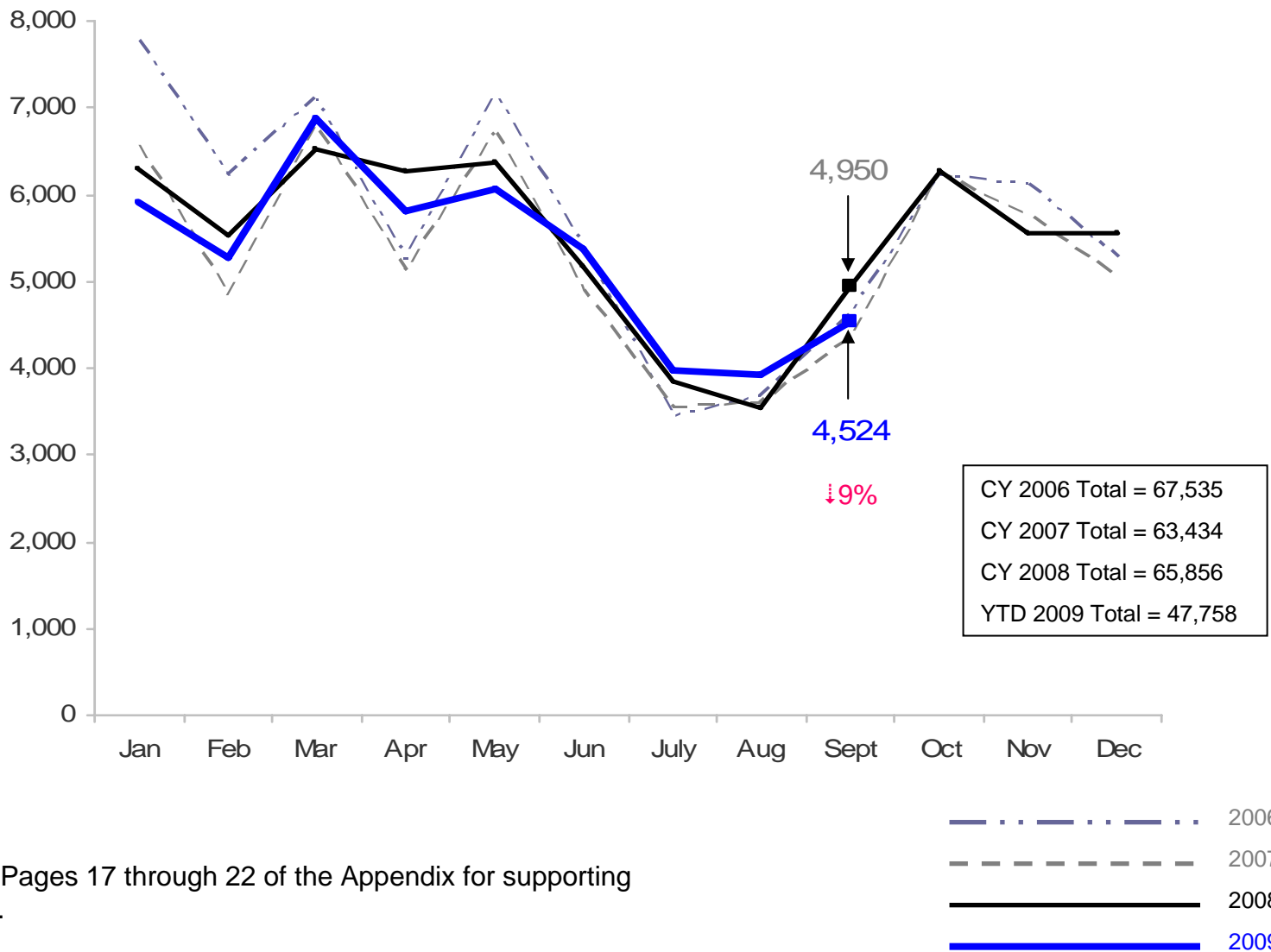
Sep 2007 - Aug 2009 (End of Month)



— 2008/2009
- - - 2007/2008

SCR Intakes

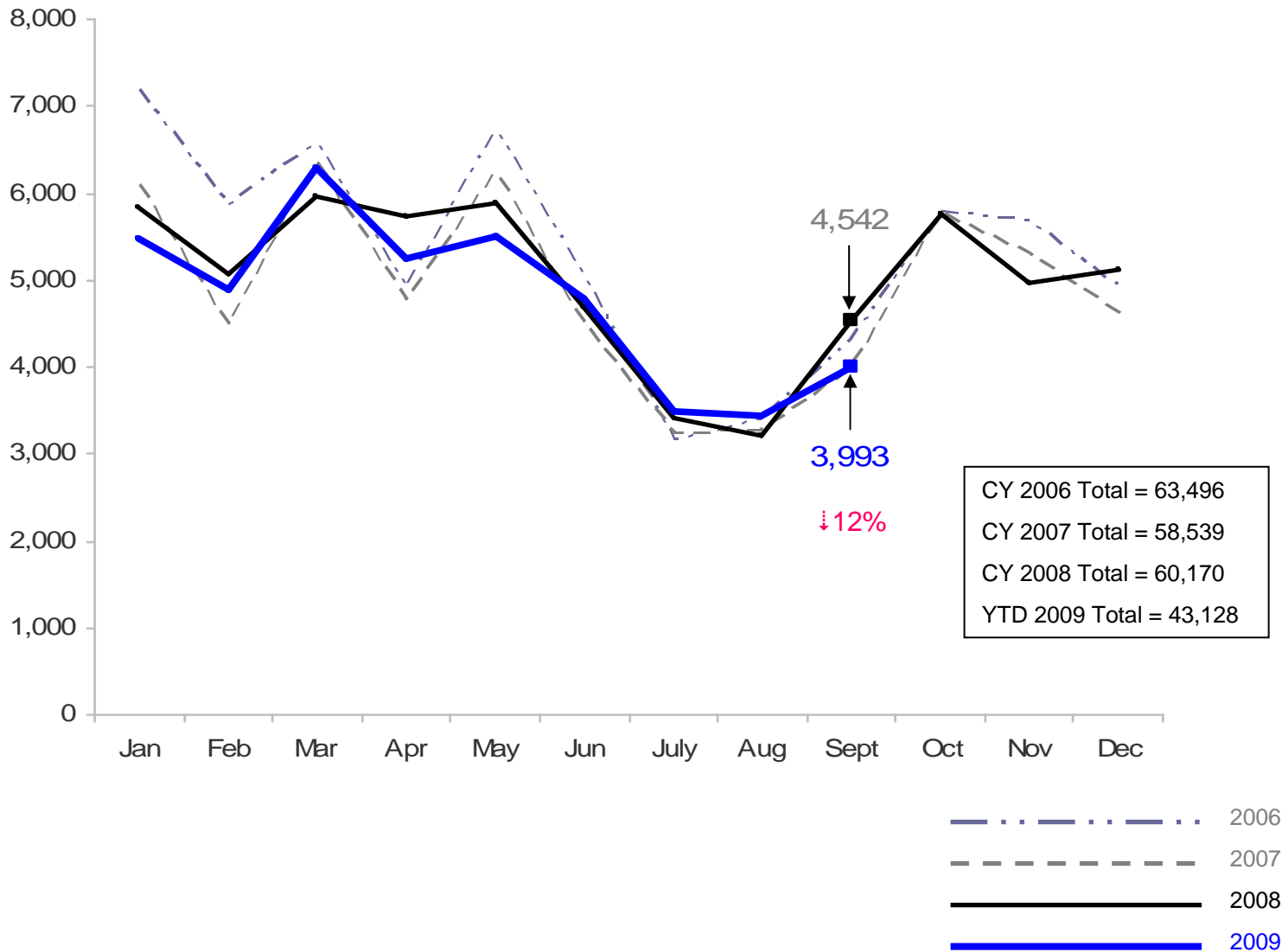
January 2006 – September 2009 (Monthly Total)



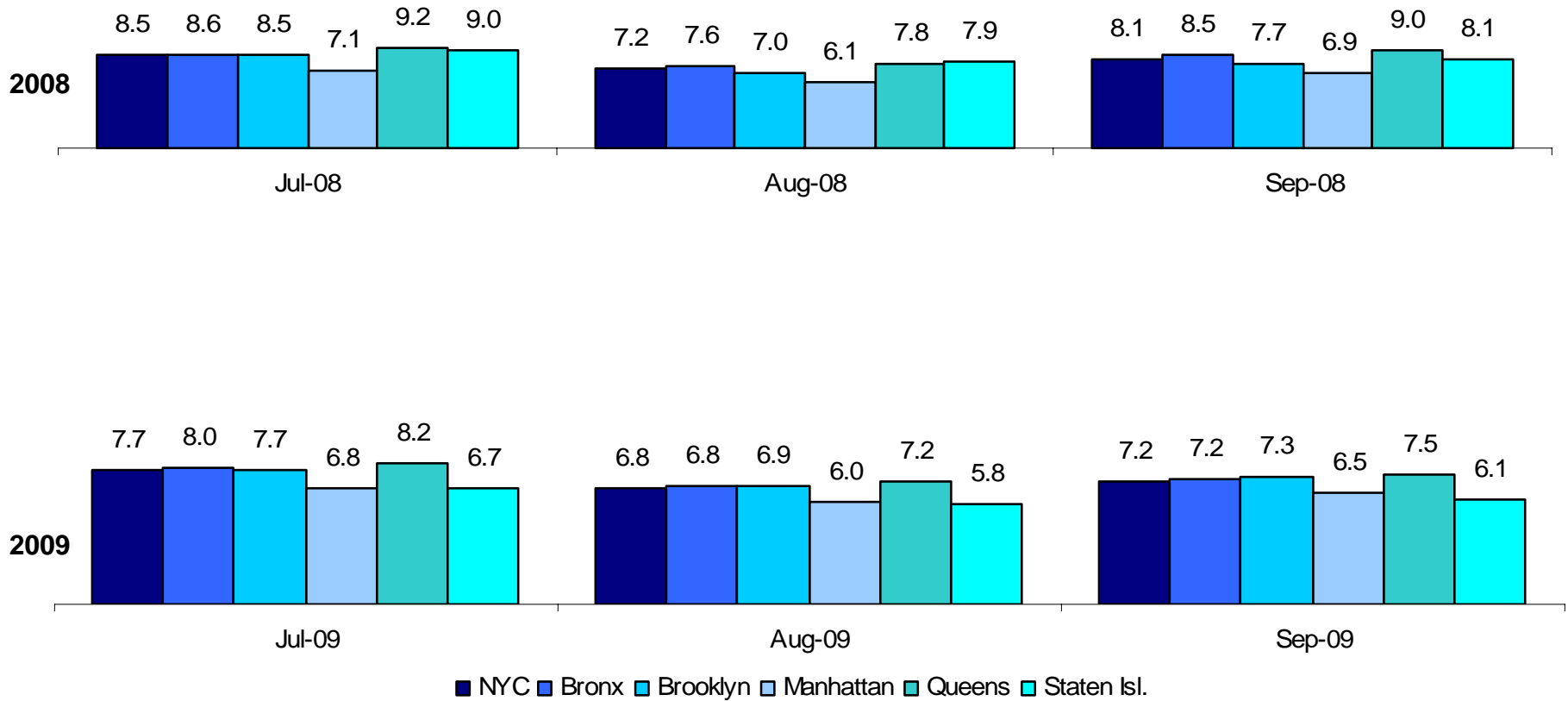
See Pages 17 through 22 of the Appendix for supporting data.

SCR Consolidated Investigations

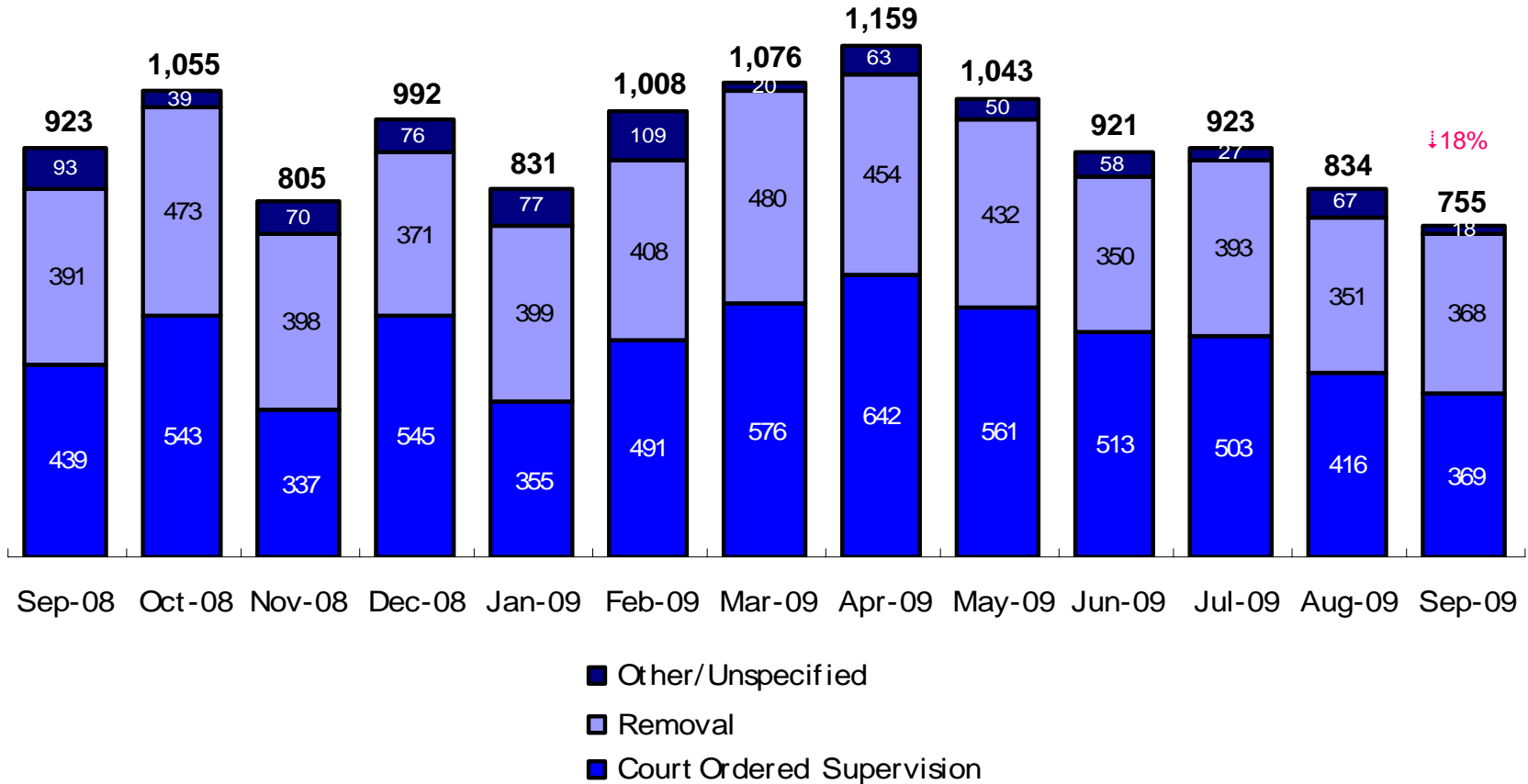
January 2006 - September 2009 (Monthly Total)



Average P/D Combined Caseload Jul – Sep 2008 & Jul – Sep 2009

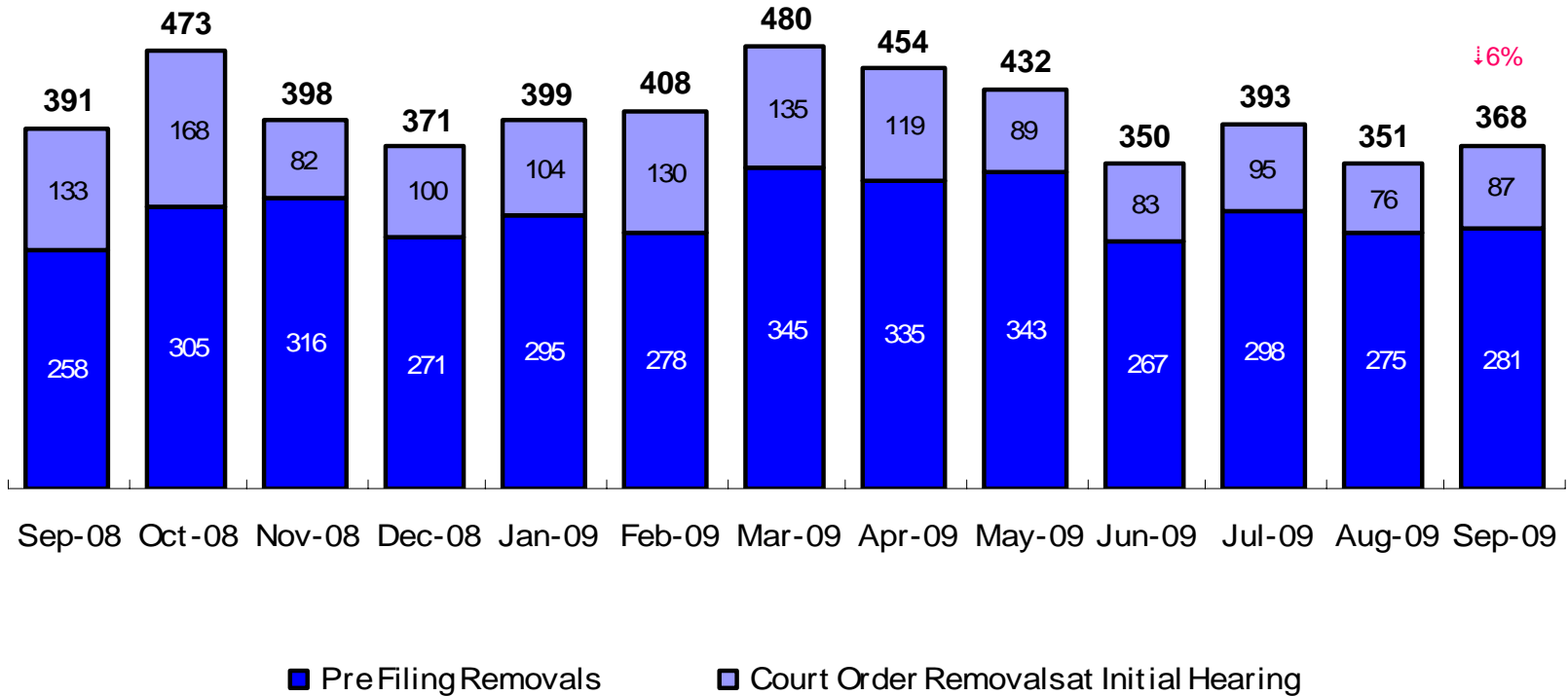


Article 10 Total Filings & Filing Outcomes, Sep 2008 – Sep 2009



Note: (1) The category “Other/Unspecified” includes released with no supervision; no order issued; and no outcome specified. (2) Percentage change is September 2008 vs. September 2009.

Court Ordered Removals, Sep 2008 – Sep 2009

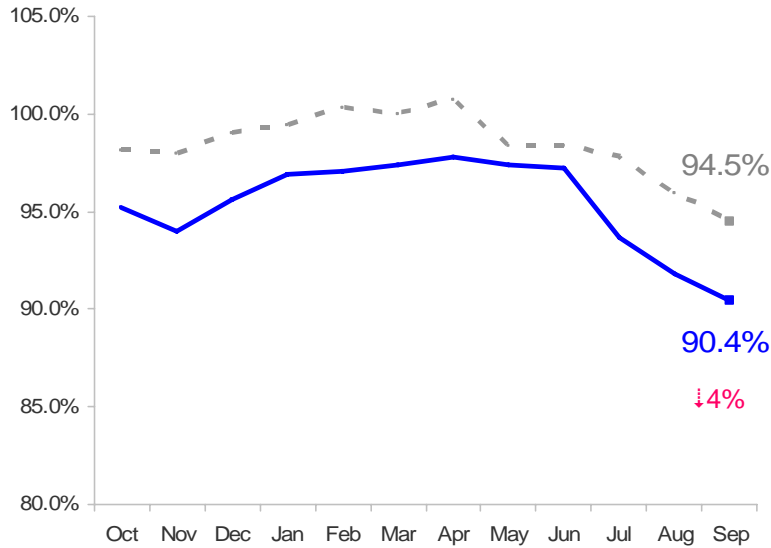


Note: (1) See pages of 23 and 24 of the Appendix for supporting data. (2) Percentage change is September 2008 vs. September 2009.

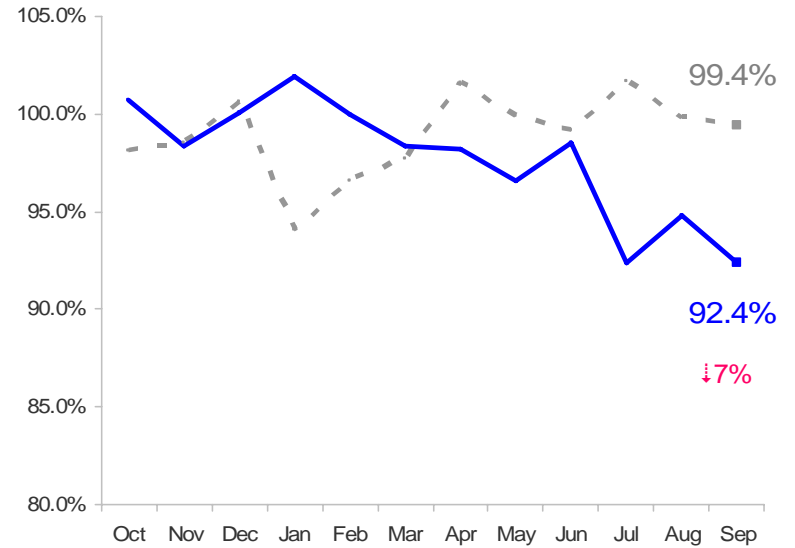
PPRS Utilization Rate, Oct 2007 – Sep 2009

(End of Month)

General Preventive



Family Rehabilitation Program

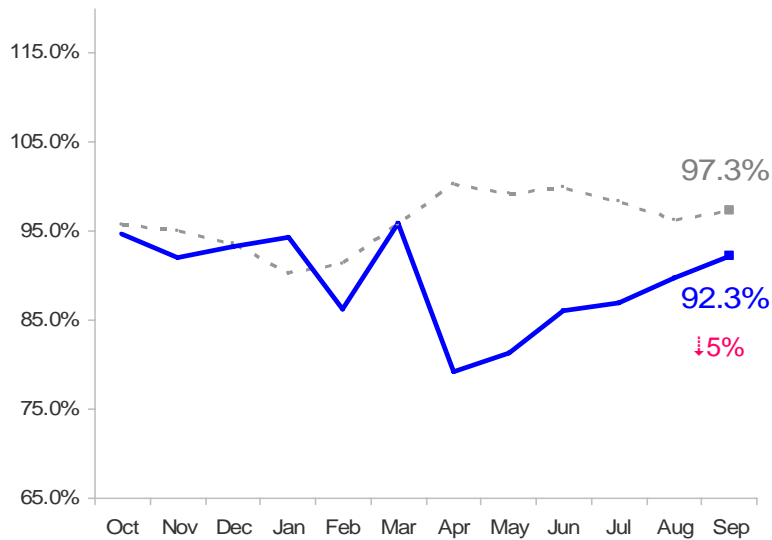


— 2008/2009
- - - 2007/2008

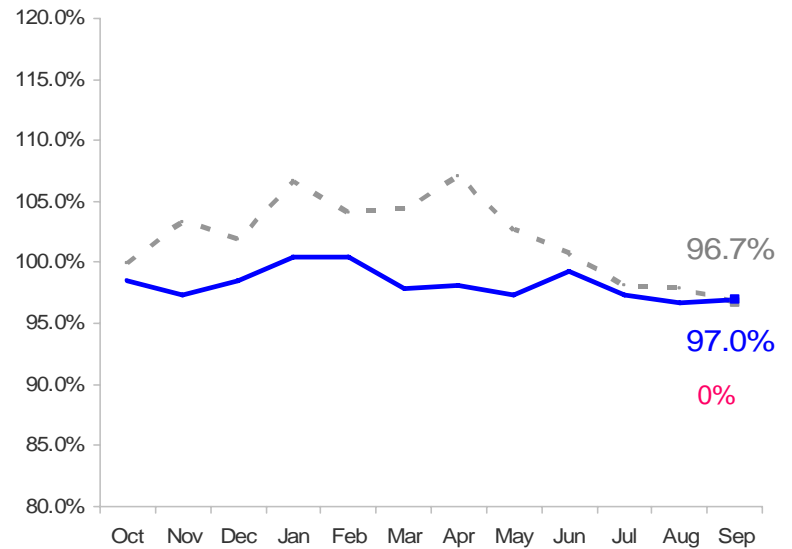
PPRS Utilization Rate, Oct 2007 – Sep 2009

(End of Month)

Medically Fragile



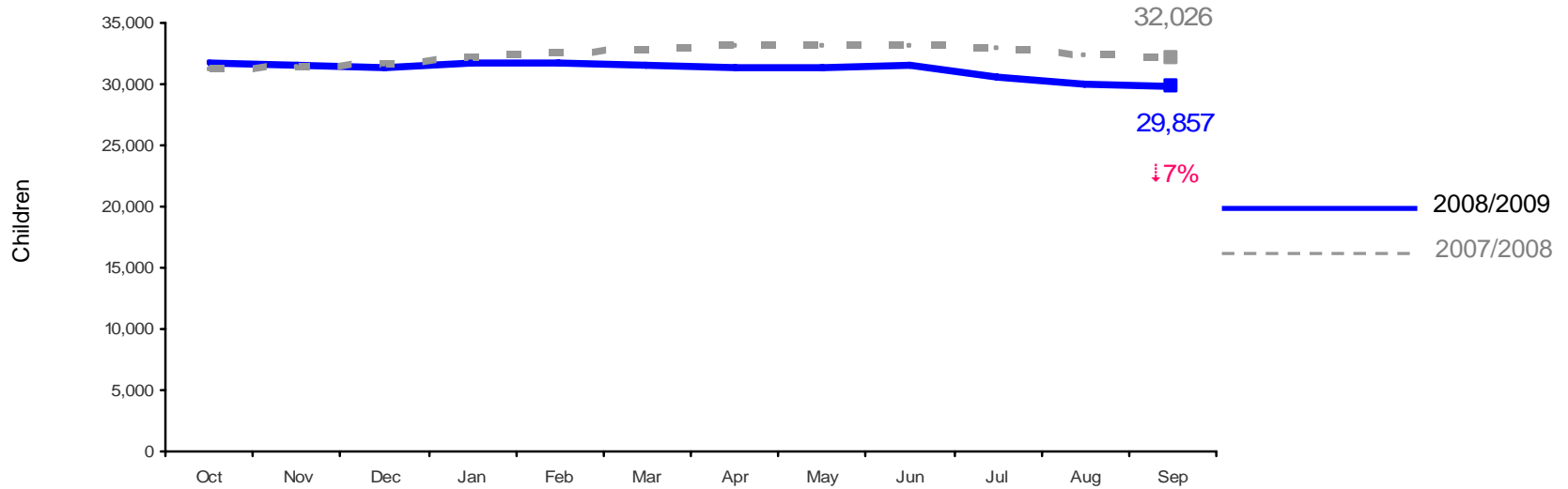
PINS Long Term



————— 2008/2009
- - - - - 2007/2008

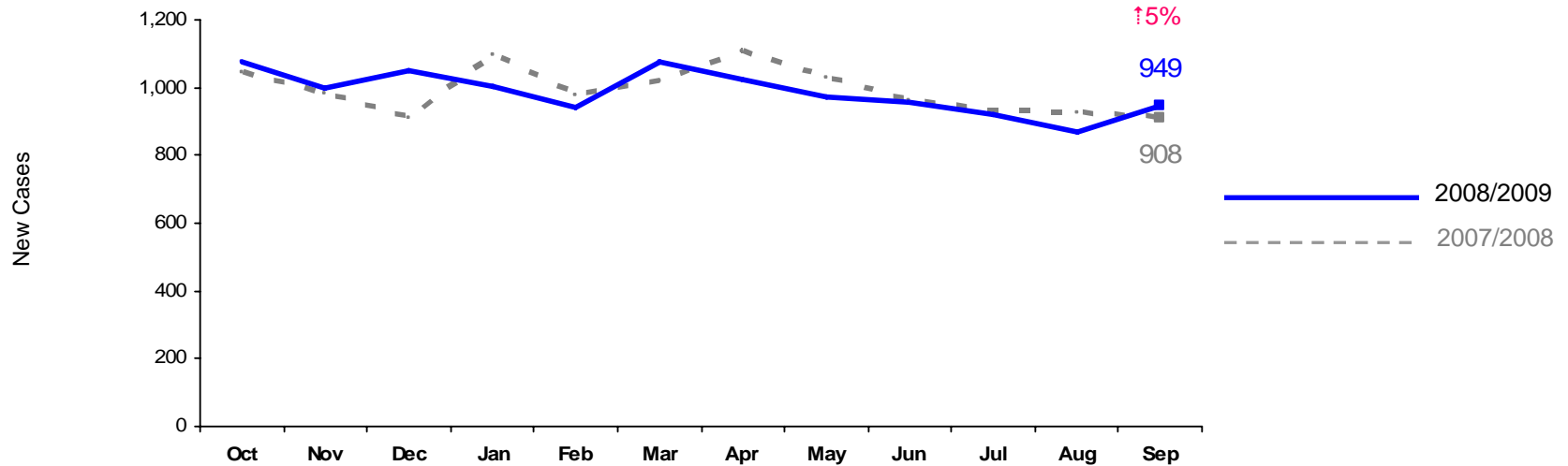
Active Number of Children Being Served in PPRS, Oct 2007 – Sep 2009

(End of Month)



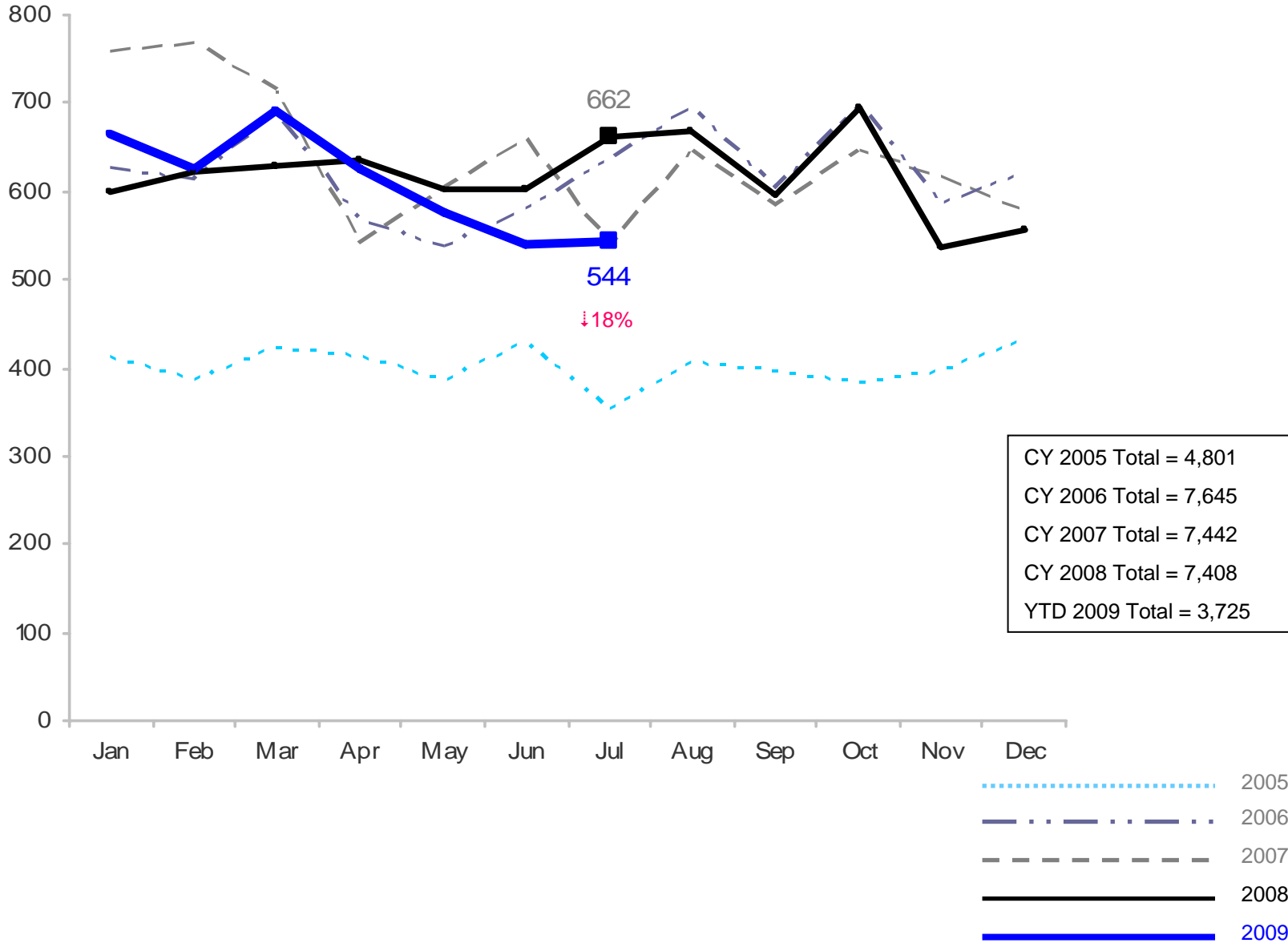
New Preventive Cases, Oct 2007 – Sep 2009

(Monthly Total)

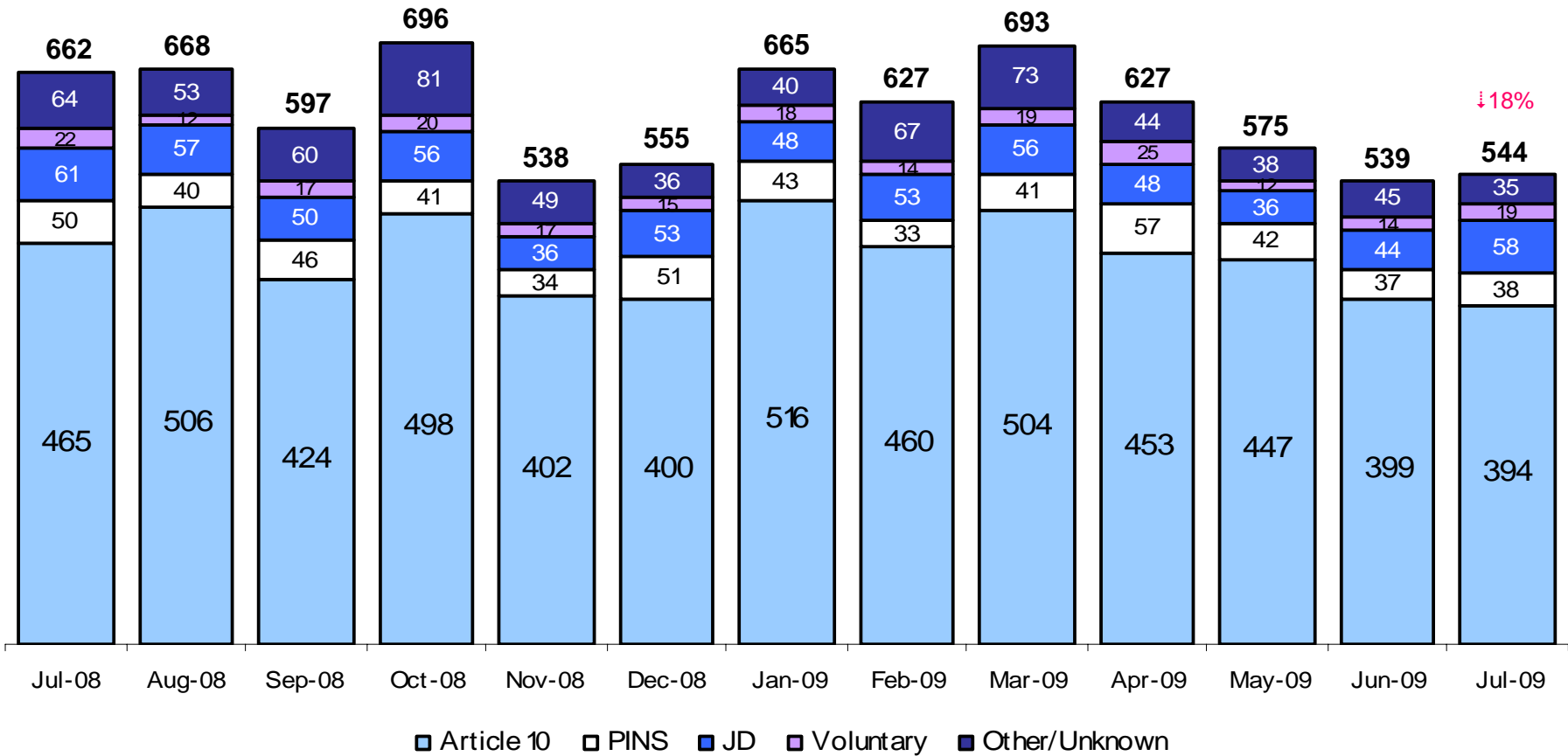


Total Monthly Placements-Preliminary

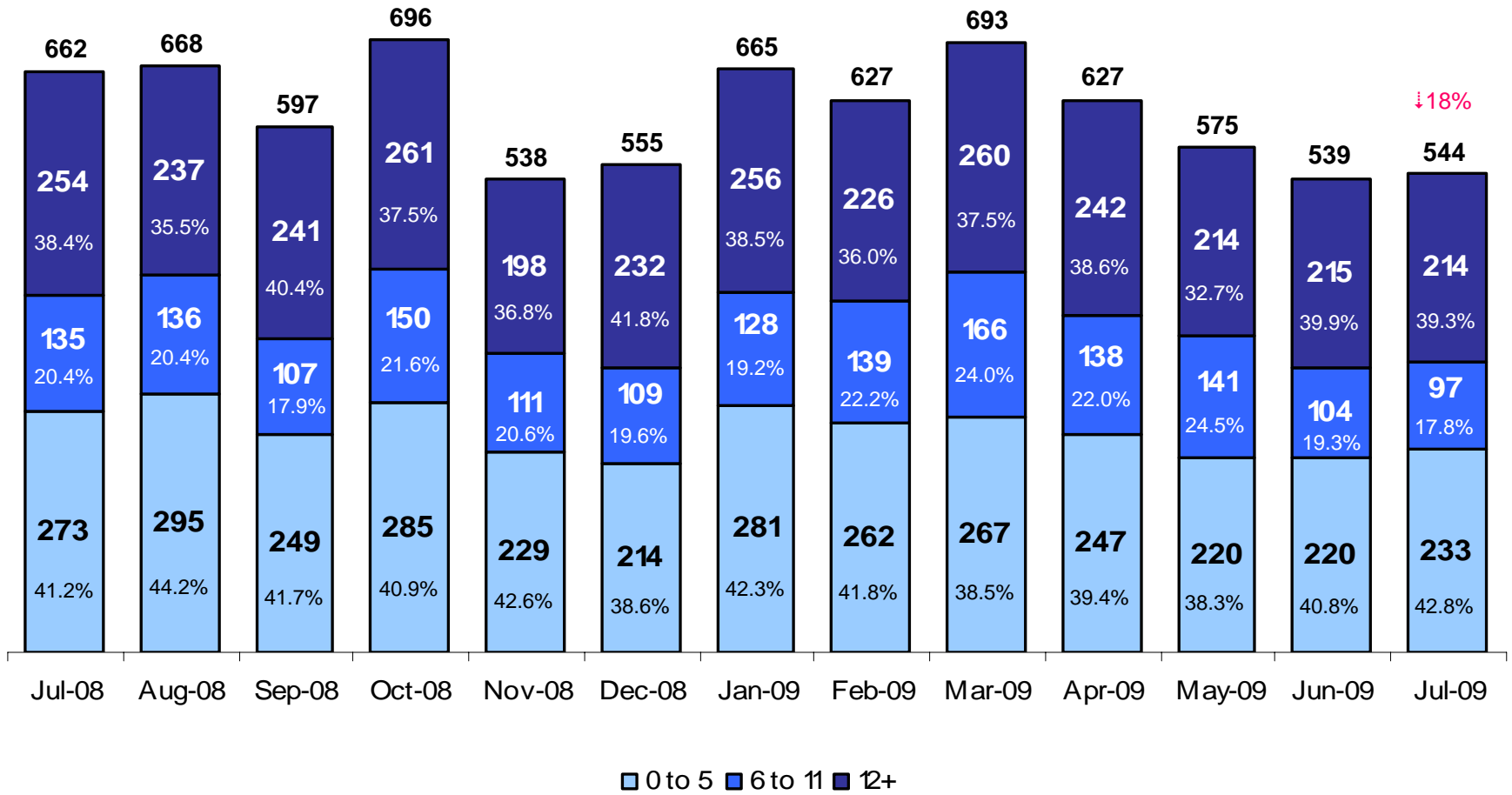
January 2005 – July 2009



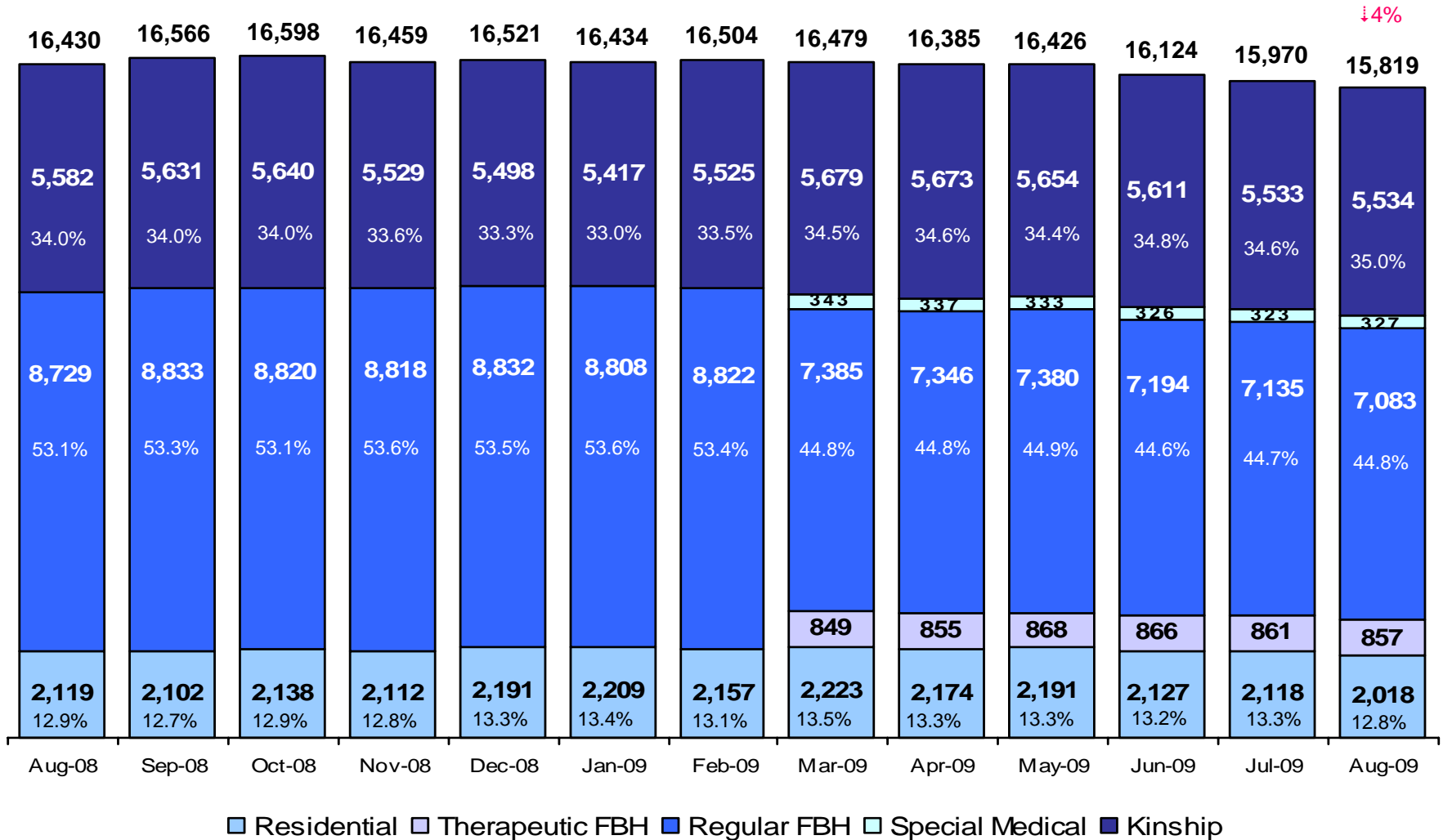
Reason for Initial Placements into Foster Care Jul 2008 – Jul 2009



Initial Placements into Foster Care by Age, Jul 2008 – Jul 2009

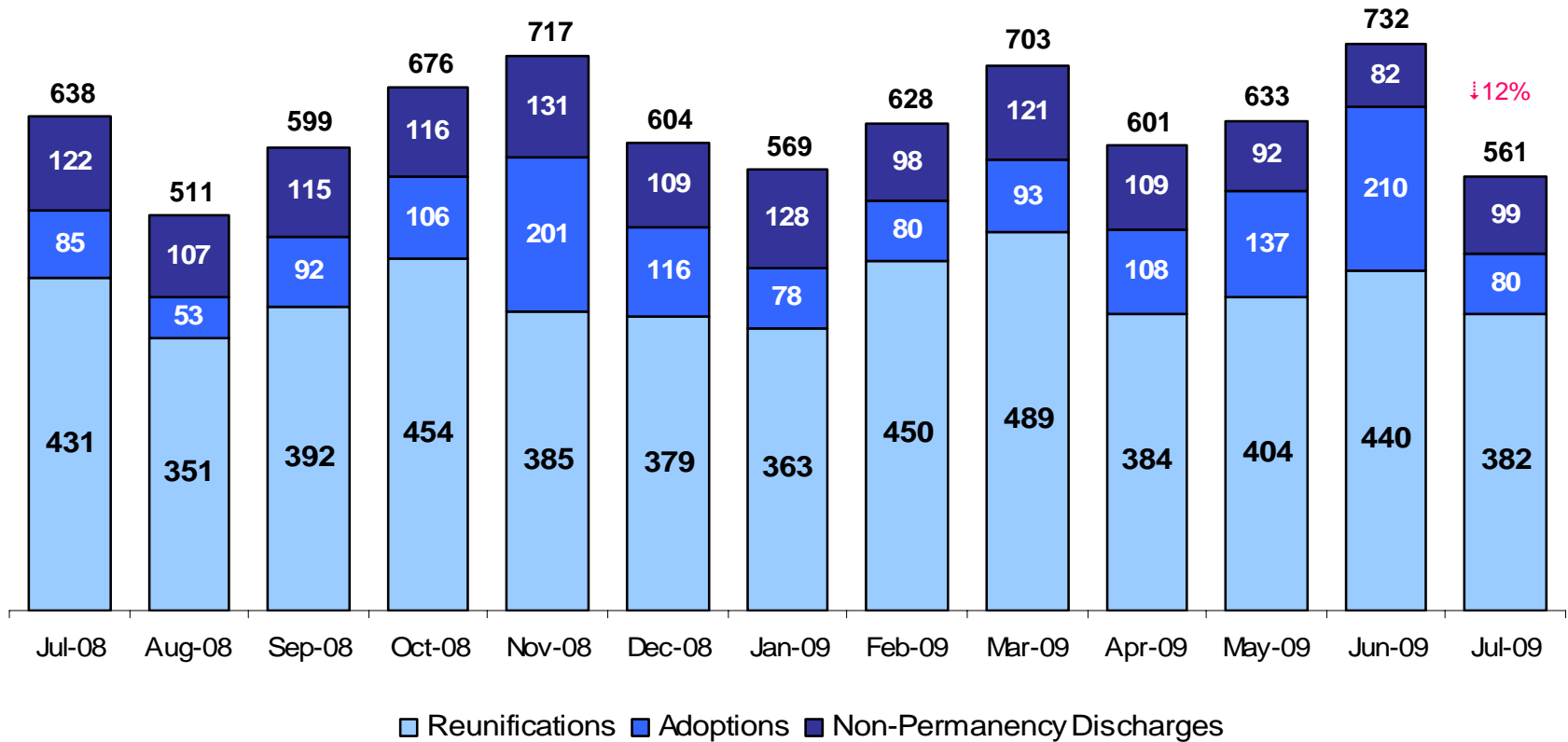


Children in Foster Care (Agency-Reported, Point-in-Time) August 2008 - August 2009



*The August monthly census was estimated to adjust for child transfers from Family Support Services Unlimited not yet recorded in the system of record.

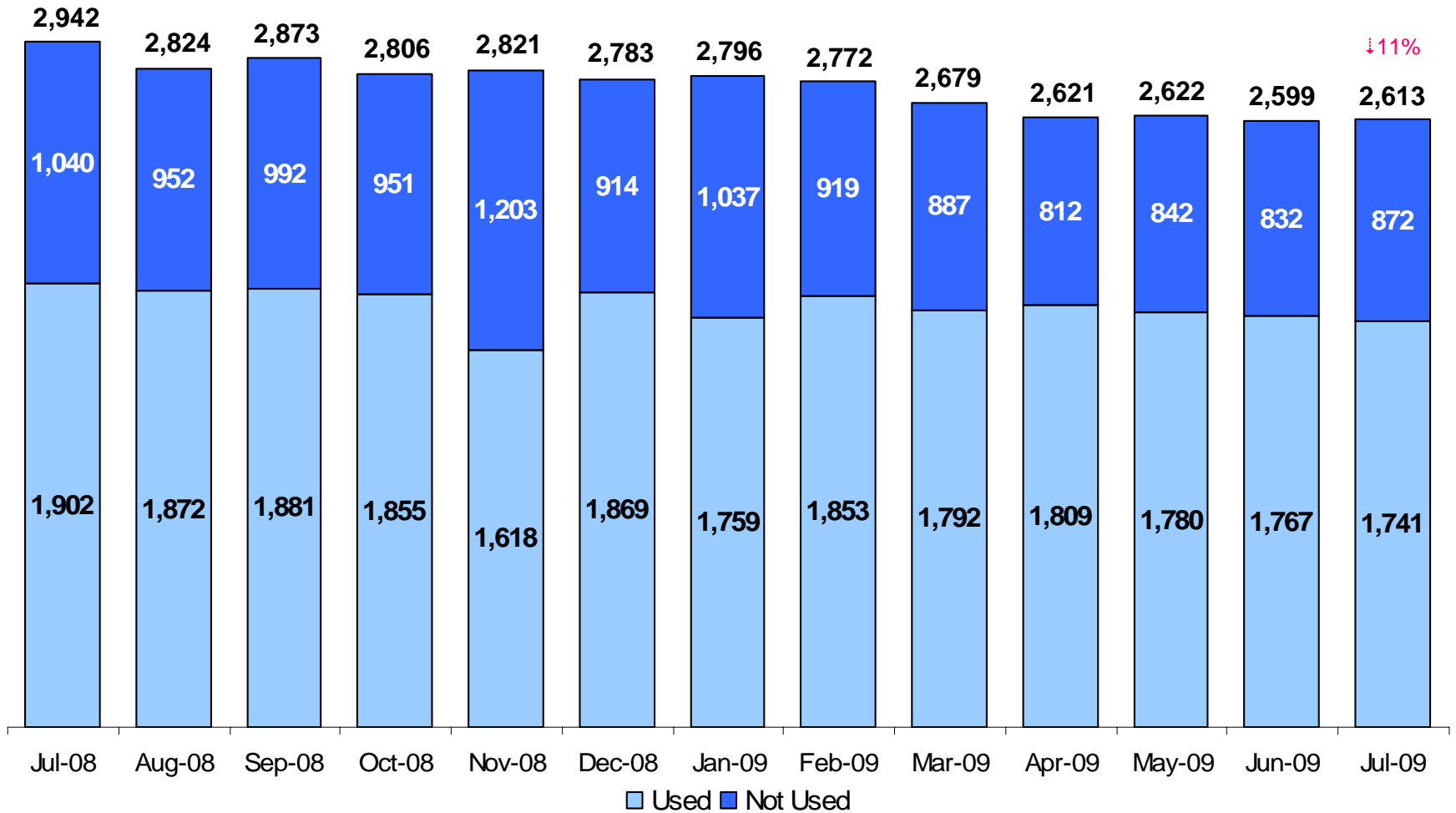
Permanency and Non-Permanency* Discharges from Foster Care July 2008 – July 2009



*Non-permanency discharges include AWOL, APPLA as well as other discharge destinations such as mental institutions and correctional facilities and discharges with unspecified destinations.

Note: Percentage change is July 2008 vs. July 2009.

Residential Care Capacity and Utilization, Jul 2008 - Jul 2009



Note: Percentage change is July 2008 vs. July 2009.

Appendix

Figure 1: SCR Intakes by Borough in Jul - Sep 2008 and Jul - Sep 2009

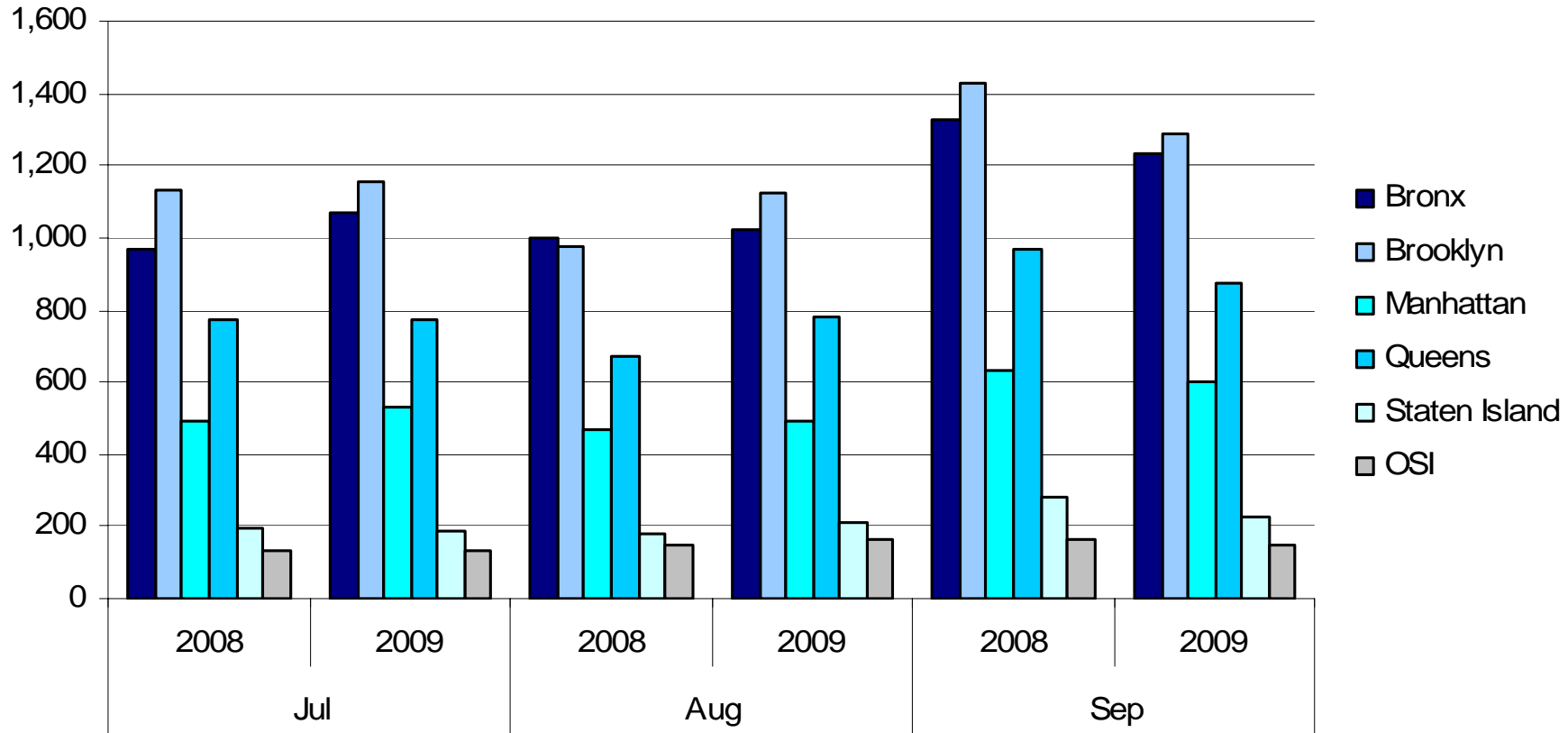
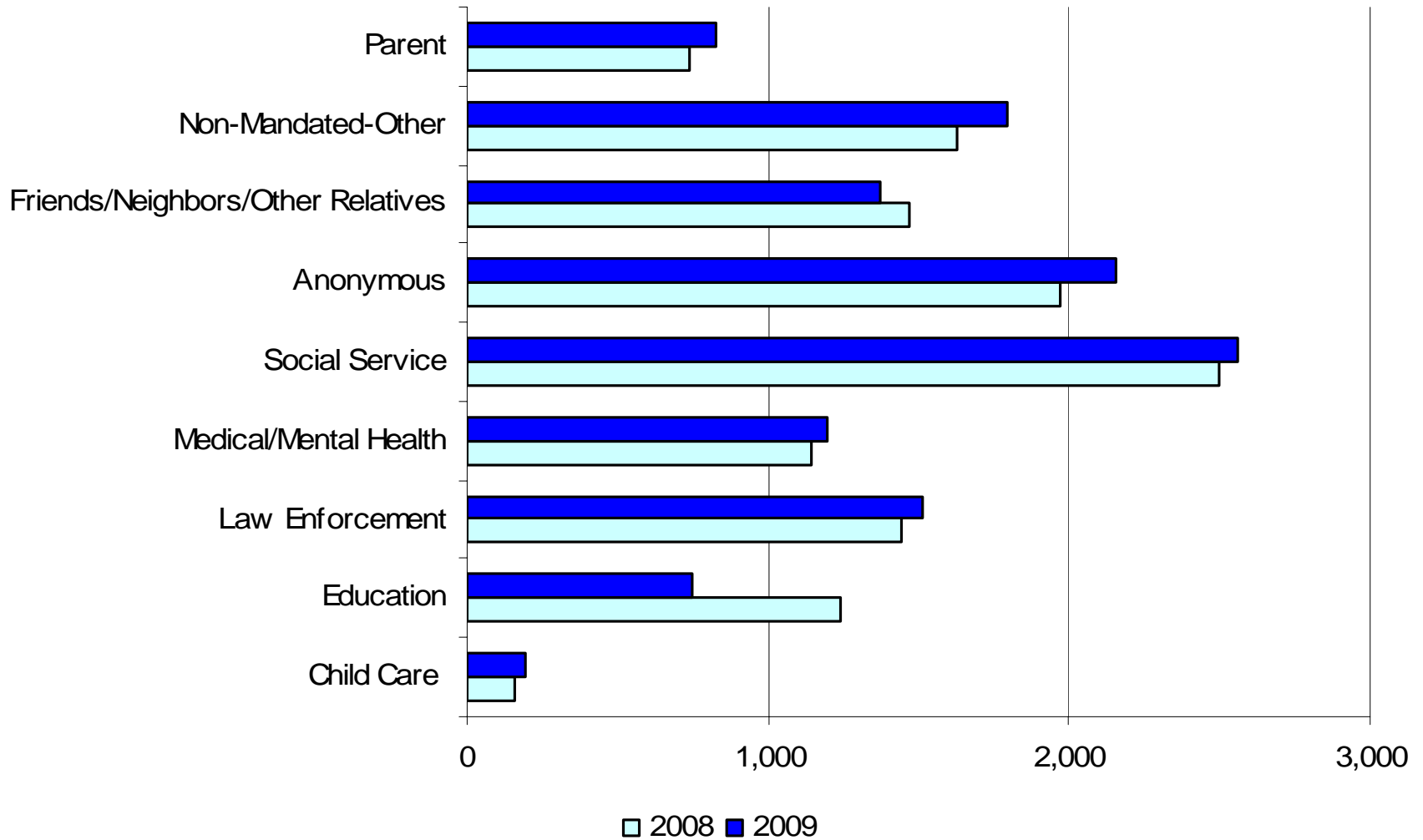


TABLE 1 - SCR Intake Changes: By Borough, JUL - SEP 08 and JUL - SEP 09

Month	Year	Bronx	Brooklyn	Manhattan	Queens	Staten Island	OSI	Other	Total
JUL	2008	964	1,128	489	771	199	136	156	5,161
	2009	1,068	1,152	532	770	185	135	135	5,380
	% Change	10.8%	2.1%	8.8%	-0.1%	-7.0%	-0.7%	-13.5%	4.2%
AUG	2008	1,000	972	467	671	183	149	110	3,552
	2009	1,026	1,122	493	777	207	167	139	3,931
	% Change	2.6%	15.4%	5.6%	15.8%	13.1%	12.1%	26.4%	10.7%
SEP	2008	1,324	1,432	632	964	280	162	156	4,950
	2009	1,235	1,286	603	877	230	151	142	4,524
	% Change	-6.7%	-10.2%	-4.6%	-9.0%	-17.9%	-6.8%	-9.0%	-8.6%
Total	2008	3,288	3,532	1,588	2,406	662	447	422	13,663
	2009	3,329	3,560	1,628	2,424	622	453	416	13,835
	% Change	1.2%	0.8%	2.5%	0.7%	-6.0%	1.3%	-1.4%	1.3%

Figure 2: Citywide SCR Intakes by Reporter Group, Jun - Aug 2008 & Jun - Aug 2009

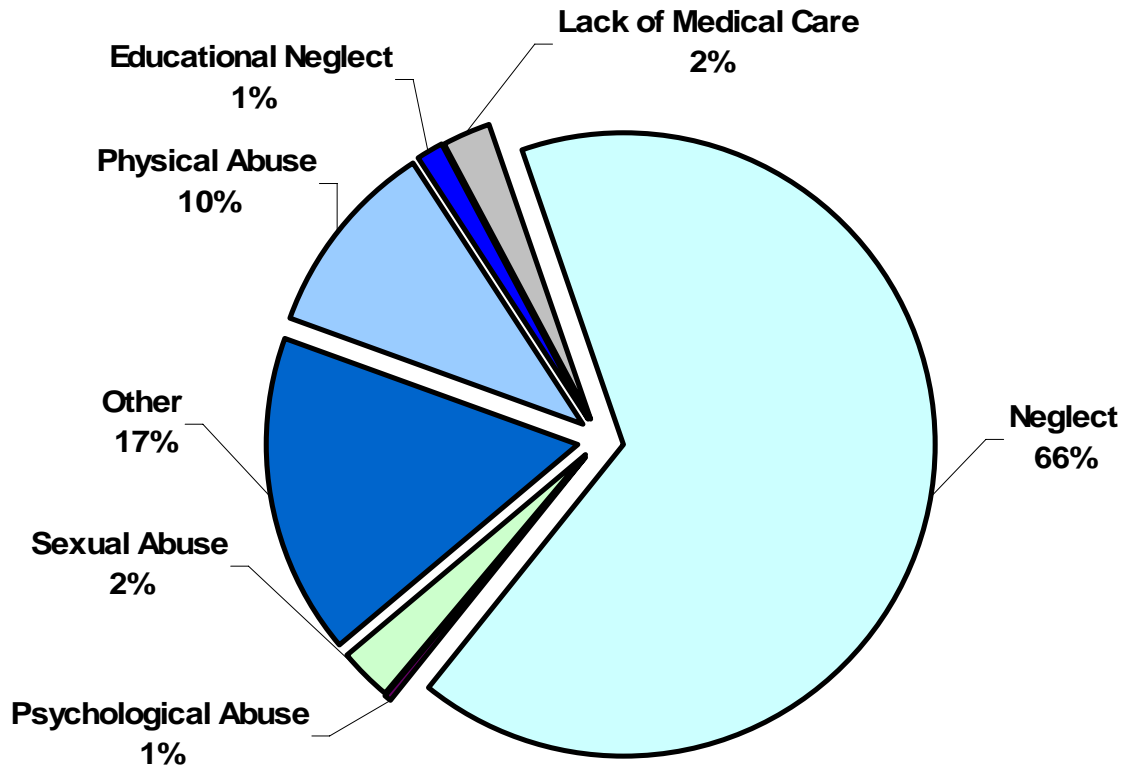


See Table in Appendix for supporting data.

TABLE 2 - SCR Intakes By Reporter Group, JUL - SEP 08 and JUL - SEP 09

Year	Child Care/ Substitute Care Personnel	Educational Personnel	Law Enforcement	Medical/ Mental Health Personnel	Mandated- Other	Social Service Personnel	Anonymous	Friends/ Neighbors/ Other Relatives	Non-Mandated- Other	Parent	Foster Parent	Total
Bronx												
2008	41	302	279	313	17	690	566	417	470	190	2	3,287
2009	40	205	329	308	17	744	602	365	517	201	1	3,329
% Change	-2.4%	-32.1%	17.9%	-1.6%	0.0%	7.8%	6.4%	-12.5%	10.0%	5.8%	-50.0%	1.3%
Brooklyn												
2008	36	387	421	320	14	665	551	472	460	204	2	3,532
2009	55	220	372	347	22	723	664	391	543	223	0	3,560
% Change	52.8%	-43.2%	-11.6%	8.4%	57.1%	8.7%	20.5%	-17.2%	18.0%	9.3%	-100.0%	0.8%
Manhattan												
2008	26	161	244	137	7	338	247	142	214	72	0	1,588
2009	35	95	260	174	16	338	252	165	211	82	0	1,628
% Change	34.6%	-41.0%	6.6%	27.0%	128.6%	0.0%	2.0%	16.2%	-1.4%	13.9%	0.0%	2.5%
Queens												
2008	24	285	337	223	7	484	369	285	269	123	0	2,406
2009	22	173	377	225	12	448	441	290	273	162	1	2,424
% Change	-8.3%	-39.3%	11.9%	0.9%	71.4%	-7.4%	19.5%	1.8%	1.5%	31.7%	NA	0.7%
Staten Island												
2008	2	78	57	67	3	103	157	92	70	33	0	662
2009	8	34	51	70	5	107	118	100	80	49	0	622
% Change	300.0%	-56.4%	-10.5%	4.5%	66.7%	3.9%	-24.8%	8.7%	14.3%	48.5%	0.0%	-6.0%
OSI												
2008	16	19	19	46	5	91	51	24	100	66	0	437
2009	29	11	23	36	5	90	52	32	130	60	3	471
% Change	81.3%	-42.1%	21.1%	-21.7%	0.0%	-1.1%	2.0%	33.3%	30.0%	-9.1%	NA	7.8%
Other												
2008	9	8	86	40	0	129	26	38	47	48	0	431
2009	2	8	100	38	2	114	26	32	37	50	0	409
% Change	-77.8%	0.0%	16.3%	-5.0%	NA	-11.6%	0.0%	-15.8%	-21.3%	4.2%	NA	-5.1%
Citywide												
2008	154	1,240	1,443	1,146	53	2,500	1,967	1,470	1,630	736	4	12,343
2009	191	746	1,512	1,198	79	2,564	2,155	1,375	1,791	827	5	12,443
% Change	24.0%	-39.8%	4.8%	4.5%	49.1%	2.6%	9.6%	-6.5%	9.9%	12.4%	25.0%	0.8%

SCR Allegations, Jul - Sep 2009



Total Allegations = 38,694

See Table 3 in Appendix for supporting data.

TABLE 3 - SCR Allegations, JUL - SEP 08 and JUL - SEP 09

Year	Physical Abuse	Educational Neglect	Lack of Medical Care	Neglect	Psychological Abuse	Sexual Abuse	Other	Total
Bronx								
2008	1,100	207	299	7,207	53	282	1,741	10,889
2009	1,092	132	291	7,258	37	269	1,850	10,929
% Change	-0.7%	-36.2%	-2.7%	0.7%	-30.2%	-4.6%	6.3%	0.4%
Brooklyn								
2008	1,190	279	242	7,424	54	284	1,726	11,199
2009	1,156	187	238	7,426	20	302	1,781	11,110
% Change	-2.9%	-33.0%	-1.7%	0.0%	-63.0%	6.3%	3.2%	-0.8%
Manhattan								
2008	472	106	119	2,961	18	114	795	4,585
2009	471	72	117	3,021	11	111	759	4,562
% Change	-0.2%	-32.1%	-1.7%	2.0%	-38.9%	-2.6%	-4.5%	-0.5%
Queens								
2008	764	144	176	4,628	16	165	1,223	7,116
2009	761	101	178	4,732	18	209	1,273	7,272
% Change	-0.4%	-29.9%	1.1%	2.2%	12.5%	26.7%	4.1%	2.2%
Staten Island								
2008	189	26	43	1,596	3	52	439	2,348
2009	202	11	52	1,466	4	33	448	2,216
% Change	6.9%	-57.7%	20.9%	-8.1%	33.3%	-36.5%	2.1%	-5.6%
OSI								
2008	160	4	29	1,057	2	55	104	1,411
2009	199	5	32	946	4	75	121	1,382
% Change	24.4%	25.0%	10.3%	-10.5%	100.0%	36.4%	16.3%	-2.1%
Other								
2008	121	17	34	745	12	29	247	1,205
2009	125	16	44	770	2	40	226	1,223
% Change	3.3%	-5.9%	29.4%	3.4%	-83.3%	37.9%	-8.5%	1.5%
Citywide								
2008	3,996	783	942	25,618	158	981	6,275	38,753
2009	4,006	524	952	25,619	96	1,039	6,458	38,694
% Change	0.3%	-33.1%	1.1%	0.0%	-39.2%	5.9%	2.9%	-0.2%

TABLE 4 - Monthly Removal Status, January 2008 - August 2009

	Pre-Filing Removals	Court Ordered Removals at Initial Hearing	Total Removals	Percentage of Pre-Filing Removals	Pre-Filing Removals	Court Ordered Removals at Initial Hearing	Total Removals	Percentage of Pre-Filing Removals	Pre-Filing Removals	Court Ordered Removals at Initial Hearing	Total Removals	Percentage of Pre-Filing Removals
MONTH	BRONX				BROOKLYN				MANHATTAN			
Jan-08	80	37	117	68.4%	72	45	117	61.5%	54	15	69	78.3%
Feb-08	89	35	124	71.8%	63	20	83	75.9%	72	13	85	84.7%
Mar-08	80	26	106	75.5%	77	41	118	65.3%	58	19	77	75.3%
Apr-08	97	44	141	68.8%	83	38	121	68.6%	36	11	47	76.6%
May-08	89	57	146	61.0%	61	32	93	65.6%	54	4	58	93.1%
Jun-08	77	44	121	63.6%	84	29	113	74.3%	62	20	82	75.6%
Jul-08	70	44	114	61.4%	70	52	122	57.4%	27	15	42	64.3%
Aug-08	95	57	152	62.5%	75	38	113	66.4%	35	8	43	81.4%
Sep-08	71	53	124	57.3%	70	22	92	76.1%	58	13	71	81.7%
Oct-08	93	51	144	64.6%	89	32	121	73.6%	39	12	51	76.5%
Nov-08	111	29	140	79.3%	79	18	97	81.4%	39	5	44	88.6%
Dec-08	91	41	132	68.9%	75	16	91	82.4%	38	5	43	88.4%
Total (CY 2008)	1,043	518	1,561	66.8%	898	383	1,281	70.1%	572	140	712	80.3%
Jan-09	82	46	128	64.1%	98	22	120	81.7%	44	5	49	89.8%
Feb-09	84	59	143	58.7%	104	22	126	82.5%	33	9	42	78.6%
Mar-09	128	44	172	74.4%	80	35	115	69.6%	65	18	83	78.3%
Apr-09	105	55	160	65.6%	80	37	117	68.4%	69	8	77	89.6%
May-09	118	41	159	74.2%	99	21	120	82.5%	61	4	65	93.8%
Jun-09	76	30	106	71.7%	98	16	114	86.0%	52	9	61	85.2%
Jul-09	101	36	137	73.7%	91	16	107	85.0%	65	5	70	92.9%
Aug-09	100	23	123	81.3%	71	24	95	74.7%	38	5	43	88.4%
Sep-09	112	20	132	84.8%	70	41	111	63.1%	63	3	66	95.5%
Total (YTD 2009)	906	354	1,260	71.9%	791	234	1,025	77.2%	490	66	556	88.1%
YTD Percent Change	33.8%	2.9%	10.0%	10.1%	35.2%	-20.7%	5.5%	14.5%	23.1%	-37.1%	-3.1%	10.9%
MONTH	QUEENS				STATEN ISLAND				CITYWIDE			
Jan-08	44	16	60	73.3%	20	14	34	58.8%	270	127	397	68.0%
Feb-08	27	23	50	54.0%	12	18	30	40.0%	263	109	372	70.7%
Mar-08	51	28	79	64.6%	43	5	48	89.6%	309	119	428	72.2%
Apr-08	45	29	74	60.8%	24	5	29	82.8%	285	127	412	69.2%
May-08	33	30	63	52.4%	23	11	34	67.6%	260	134	394	66.0%
Jun-08	27	33	60	45.0%	9	17	26	34.6%	259	143	402	64.4%
Jul-08	40	35	75	53.3%	16	22	38	42.1%	223	168	391	57.0%
Aug-08	28	35	63	44.4%	24	15	39	61.5%	257	153	410	62.7%
Sep-08	45	30	75	60.0%	14	15	29	48.3%	258	133	391	66.0%
Oct-08	41	54	95	43.2%	43	19	62	69.4%	305	168	473	64.5%
Nov-08	65	20	85	76.5%	22	10	32	68.8%	316	82	398	79.4%
Dec-08	43	28	71	60.6%	24	10	34	70.6%	271	100	371	73.0%
Total (CY 2008)	489	361	850	57.5%	274	161	435	63.0%	3,276	1,563	4,839	67.7%
Jan-09	42	29	71	59.2%	29	2	31	93.5%	295	104	399	73.9%
Feb-09	48	39	87	55.2%	9	1	10	90.0%	278	130	408	68.1%
Mar-09	57	33	90	63.3%	15	5	20	75.0%	345	135	480	71.9%
Apr-09	55	18	73	75.3%	26	1	27	96.3%	335	119	454	73.8%
May-09	45	21	66	68.2%	20	2	22	90.9%	343	89	432	79.4%
Jun-09	33	19	52	63.5%	8	9	17	47.1%	267	83	350	76.3%
Jul-09	31	35	66	47.0%	10	3	13	76.9%	298	95	393	75.8%
Aug-09	56	22	78	71.8%	10	2	12	83.3%	275	76	351	78.3%
Sep-09	25	22	47	53.2%	11	1	12	91.7%	281	87	368	76.4%
Total (YTD 2009)	392	238	630	62.2%	138	26	164	84.1%	2,717	918	3,635	74.7%
YTD Percent Change	32.9%	3.9%	5.2%	9.6%	-19.3%	-75.7%	-46.6%	39.6%	27.8%	-15.0%	1.1%	12.8%

Article 10 Filing Outcomes

Year/Month	Children in SCR Reports	Children in Indicated SCR Reports	Art. 10 Filings	Art 10 Filings per 100 Children in Indicated Reports	Court Ordered Supervision (COS)	COS per 100 Children in Indicated Reports	Court Ordered Removals at Initial Filing	Pre-Filing Remand*	Removals* per 100 Children in Indicated Reports
2007									
Jan-07	9,533	4,034	1,091	27.0	500	12.4	164	259	10.5
Feb-07	7,000	2,900	1,067	36.8	530	18.3	151	271	14.6
Mar-07	9,673	4,073	1,236	30.3	624	15.3	179	279	11.2
Apr-07	7,420	3,129	909	29.1	499	15.9	144	181	10.4
May-07	9,502	3,795	1,031	27.2	583	15.4	124	182	8.1
Jun-07	7,315	2,922	1,053	36.0	570	19.5	139	226	12.5
Jul-07	6,020	2,427	856	35.3	428	17.6	159	202	14.9
Aug-07	6,126	2,561	1,119	43.7	535	20.9	213	240	17.7
Sep-07	6,741	2,814	928	33.0	465	16.5	116	255	13.2
Oct-07	9,041	3,661	1,176	32.1	579	15.8	183	293	13.0
Nov-07	8,305	3,458	941	27.2	474	13.7	127	234	10.4
Dec-07	7,277	3,041	849	27.9	389	12.8	149	231	12.5
Total	93,953	38,815	12,256	31.6	6,176	15.9	1,848	2,853	12.1
CY06 to CY07 Percent Change	-8.0%	-4.3%	-0.8%	3.6%	10.3%	15.3%	-26.0%	2.4%	-7.0%

2008									
Jan-08	8,825	3,780	963	25.5	504	13.3	127	246	9.9
Feb-08	7,854	3,438	779	22.7	407	11.8	109	225	9.7
Mar-08	9,323	4,016	855	21.3	403	10.0	119	274	9.8
Apr-08	8,953	3,703	975	26.3	530	14.3	127	246	10.1
May-08	8,725	3,781	968	25.6	510	13.5	134	230	9.6
Jun-08	7,695	3,166	886	28.0	434	13.7	143	233	11.9
Jul-08	6,461	2,711	903	33.3	440	16.2	168	204	13.7
Aug-08	6,206	2,423	920	38.0	462	19.1	153	224	15.6
Sep-08	7,630	2,855	923	32.3	439	15.4	133	232	12.8
Oct-08	9,121	3,440	1,055	30.7	543	15.8	168	274	12.8
Nov-08	7,962	3,118	805	25.8	337	10.8	82	289	11.9
Dec-08	8,016	3,466	992	28.6	545	15.7	100	242	9.9
Total	96,771	39,897	11,024	27.6	5,554	13.9	1,563	2,919	11.2
CY07 to CY08 Percent Change	3.0%	2.8%	-10.1%	-12.5%	-10.1%	-12.5%	-15.4%	2.3%	-7.2%

2009 (January - August)									
Jan-09	8,582	3,265	831	25.5	355	10.9	104	254	11.0
Feb-09	7,770	3,240	1,008	31.1	491	15.2	130	256	11.9
Mar-09	9,875	4,220	1,076	25.5	576	13.6	135	306	10.5
Apr-09	8,611	3,201	1,159	36.2	642	20.1	119	295	12.9
May-09	8,846	3,822	1,043	27.3	561	14.7	89	303	10.3
Jun-09	8,170	3,219	921	28.6	513	15.9	83	230	9.7
Jul-09	6,633	2,542	923	36.3	503	19.8	95	274	14.5
Aug-09	6,564	2,698	834	30.9	416	15.4	76	245	11.9
Total	65,051	26,207	7,795	29.7	4,057	15.5	831	2,163	11.4
Jan-Aug 2008 to Jan-Aug 2009 Percent Change	1.6%	-3.0%	7.5%	10.9%	9.9%	13.3%	-23.1%	14.9%	4.2%

*Notes on the Initial Filing Remand count:

1. The removal date is supplied to FCLS by the caseworker during the intake process.
2. This count is run by removal date. If the child was removed on 01/31/07 by DCP and was brought to FCLS for intake on 2/1/07, the child will be counted in the totals for January.
3. If a child was removed by DCP and the case was not brought to FCLS for filing, the child will not be in this count.